



# Innovative Technology for Safety

# ARTIFICIAL INTELLIGENCE FOR HUMAN DETECTION

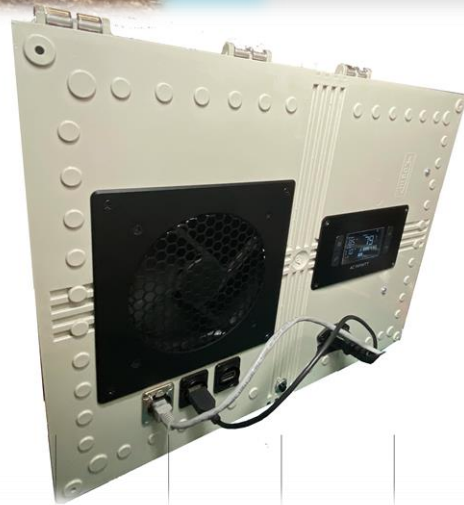
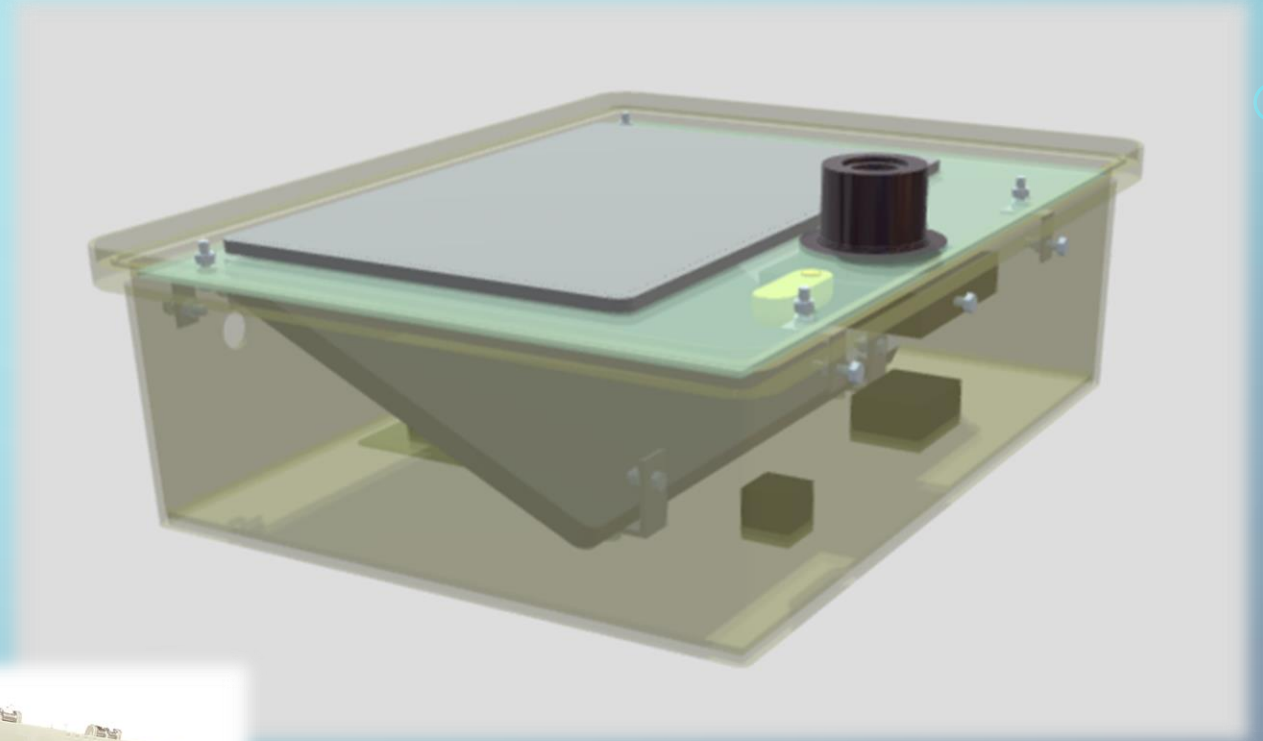


*Next slide IoTUSA Thermal AI-M1-A Video*



# THERMAL AI-M1-A

PATENT PENDING



Click for Sample: <https://youtu.be/b5TPFIEnyaE>

# Helping Your City And Shops Get Back To Work Safely

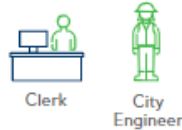
Non-Contact Thermal Monitoring with Fully Integrated Multi-Site Reporting

Cities and Businesses  
Working Together for a  
Safer Community

## Protect City Workers



City Hall



Clerk

City Engineer



By-Law Officer

Office Worker



All data. Protected. Secure.



## Protect Your Patrons



Local Business



Banks



Hotels



Grocery Stores



Restaurants

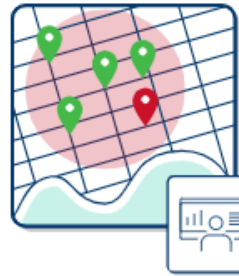


Pharmacies



Gas Stations

### City Map - Safe Shop Locations



- Multi-site Location DataHub
- Real-time Alerts
- SAFE SHOP Locations
- Live Reporting System
- Identify Community Hot Spots

### DataHub

Monitor. Collect. Report.

### Real-Time Temperature Detection

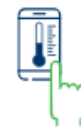


### Keep frontline staff and citizens safe

- Protect essential services workers
- Early detection of high temperature
- Real-time alerts and reporting
- Assist health officials to respond faster
- Iotciti Connect™ IoT platform Included
- Integrates with any legacy system
- Promote your city as a safe community



- Simple to install
- Same-day results
- Easy to use
- Hands-free
- Non-contact thermal monitoring



- Mobile App timestamps and logs temperature
- Record your personal temperature info securely

### Retain customer loyalty - be a SAFE SHOP

- Identify patrons with a high temperature
- Receive real-time alerts
- Available multi-site reporting in real-time
- Enterprise-Grade for Franchises and National Brands
- Safeguard your reputation
- Promote your business as a SAFE SHOP
- Leverage Iotciti's marketing package

# ARTIFICIAL INTELLIGENCE FOR HUMAN TEMPERATURE DETECTION

- High-efficiency screening of elevated temperatures
- Safe, non-contact thermal imaging
- Real-time measurement and alerts
- No privacy issues – identifies temperature and not identity



Non Contact



High Efficiency



Accurate



Single File or  
Large Crowds



Real-Time Alerts

# INDUSTRIAL GRADE THERMAL REPORTING SYSTEM

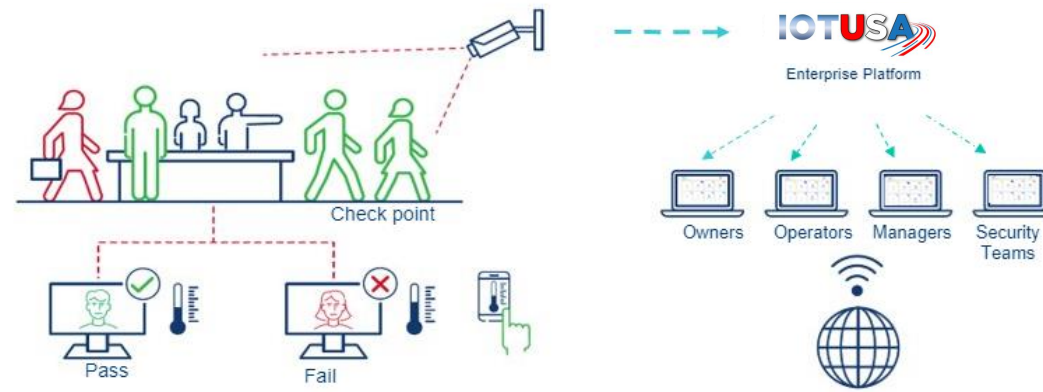
## Fully Integrated Multi-Site Reporting

IoT platform for centralized reporting from anywhere to anyone.

## Private Secure Remote Access for

- Owners & operators
- Managers
- Security teams
- Healthcare systems
- Site managers
- Residents

Our private network.  
Your private data.  
Protected. Secure.



# INDUSTRIAL GRADE THERMAL REPORTING SYSTEM

- Screening – early detection
- Real-time temperature measurement
- No privacy issues – identifies temperature and not identity
- Early alert of potential infection
- Early isolation of potential cases
- Rapid and easy deployment

## Private Secure Remote Access for:

- Owners
- Operators
- Managers
- Security teams
- Healthcare systems
- Site managers
- Residents



Exterior High Resolution Camera  
with Advanced AI



COVID 19 response Camera  
Human Temperature Detection  
Camera with Advanced AI

# THERMAL REPORTING DASHBOARD SNAPSHOTS



Measure a line of people



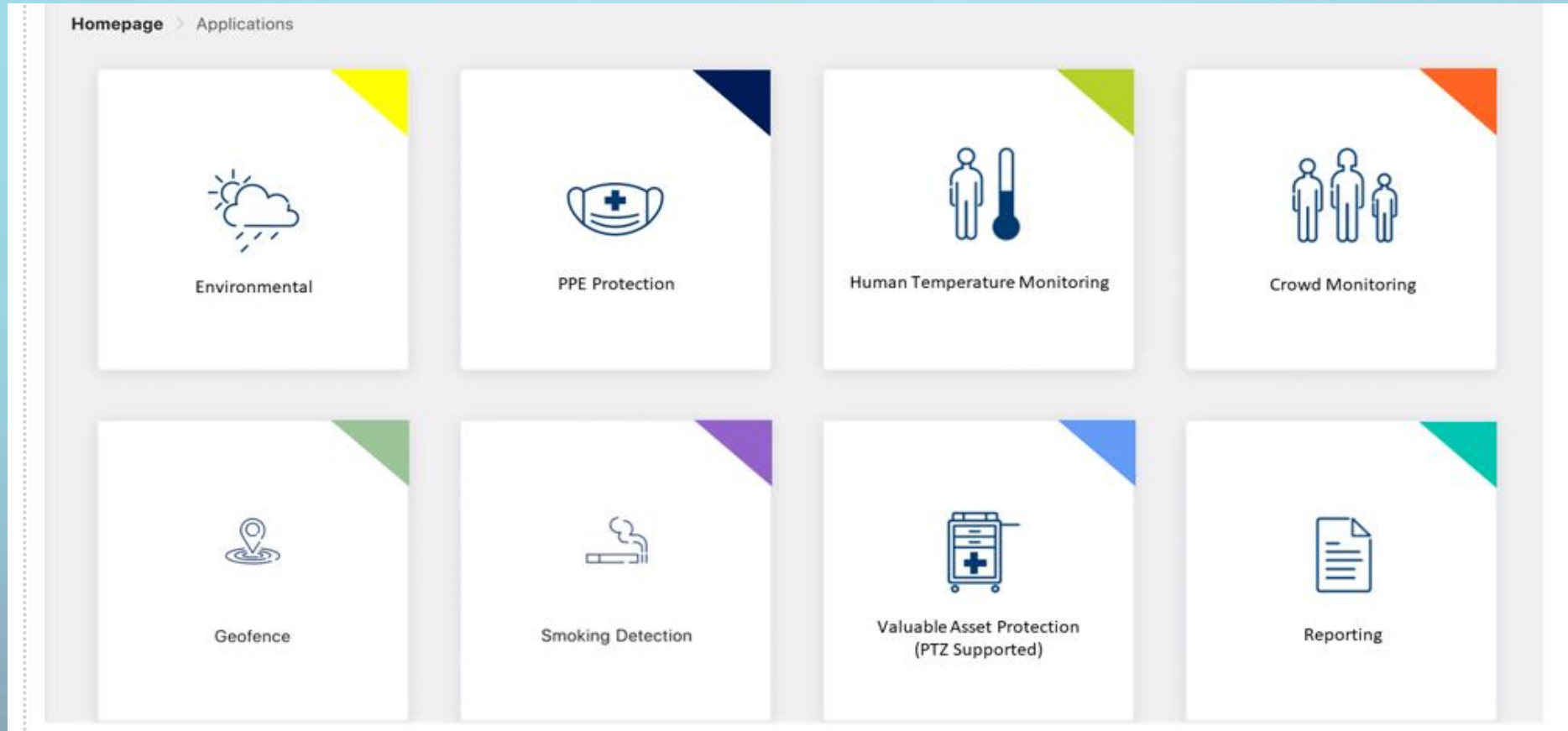
Measure a crowd



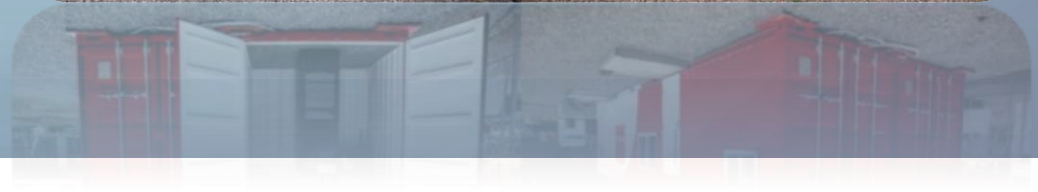
Dashboard provides Real-time alerts



# THERMAL AI DASHBOARD



# SITECENTER HQ



# CONSTRUCTION JOBSITE CHALLENGES

## Safety Requirements

- Workforce
- Safety equipment – site location
- Man-down awareness
- Workforce arrival & departure

## No Visibility

- Equipment & tool location
- Third-party supply chain
- Head office
- Jobsite
- Global access

## No Real-time, Local Environmental Data

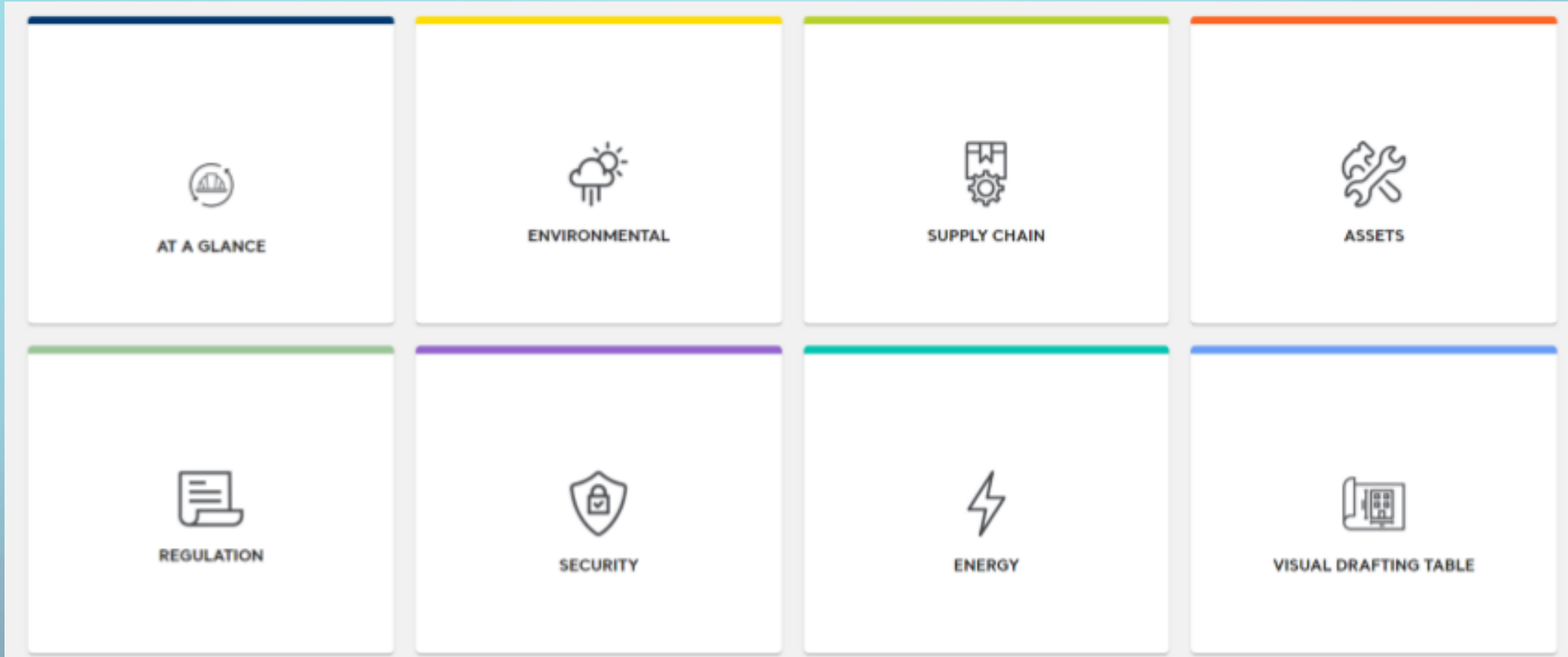
- Wind levels
- Air quality (noxious gases)
- Noise levels
- Water quality & testing

## Reporting Information

- Third-party supply chain deliveries
- Weather & environment
- Workforce incidents
- Unauthorized access



# SITECENTER HQ DASHBOARD



# ARTIFICIAL INTELLIGENCE



## Dumpster / Bin Monitoring

- Fill level (0-100%)
- Dumpster color / #
- Abnormal object detection
- Logging & statistics reporting (timestamp & dumping events)



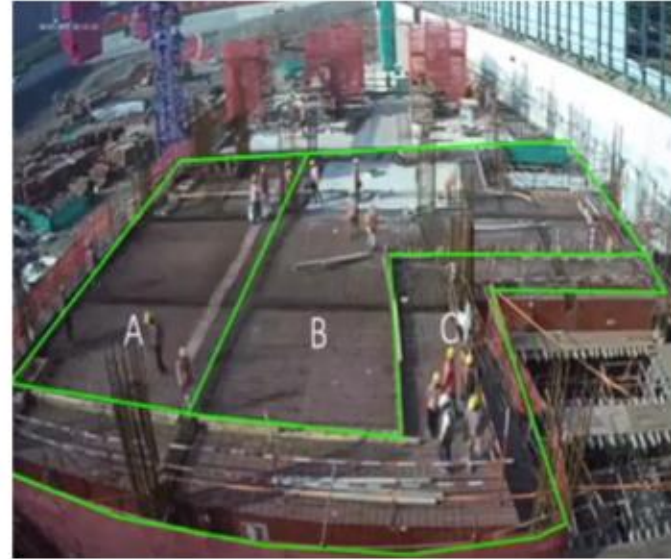
## Valuable Asset Protection

- Geofencing valuable assets
- Monitor & alert when vehicles or people are near assets



## Monitoring & Reporting

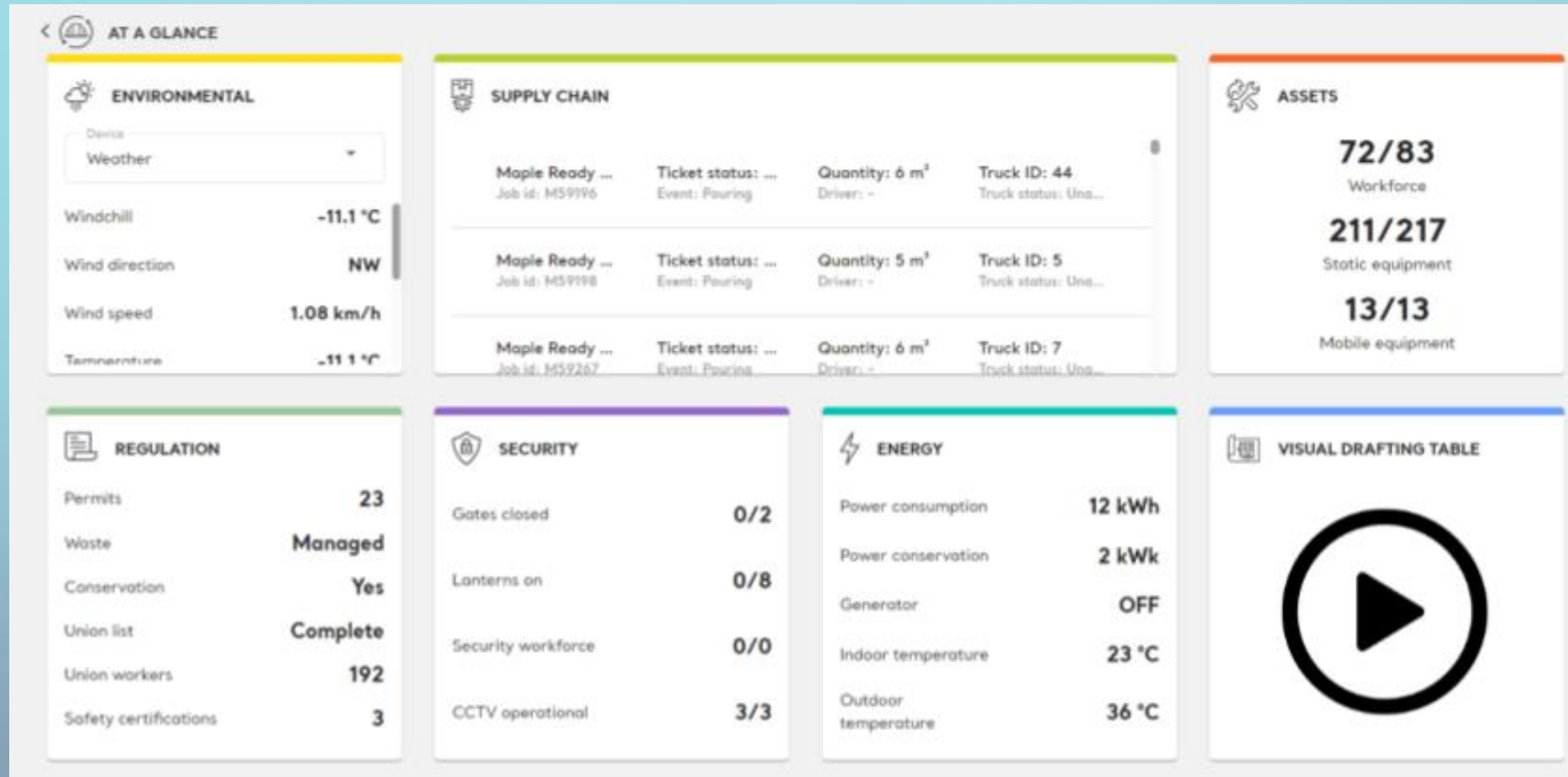
- **Type:** Dump truck
- **Vendor:** Charter Way
- **Model:** Mercedes truck
- **Model:** BICW4151
- **Load:** Soil
- **Action:** Loading
- **Driver #:** 1
- **Passengers #:** 1
- **Direction:** In
- **Time:** 11:38 AM
- **Total # of Loads:** 5
- **Average Load/Hr:** 0.7



## Worker Monitoring

- Workforce counting
- # of workers on jobsite
- # of workers in each zone
- Workforce danger zone alerts
- Event history logging
- Safety wear detection (i.e. hard hat, safety vest & boots)

# DASHBOARD DRILL DOWN



# WEATHER MONITORING

## Weather Reporting:

Provides real-time localized weather information 24/7.

## Air Quality Sensor System:

Connects on site weather station monitors air quality in real-time with 24/7 alerts reporting pollutant concentrations that are excessive.

## Wind Monitoring:

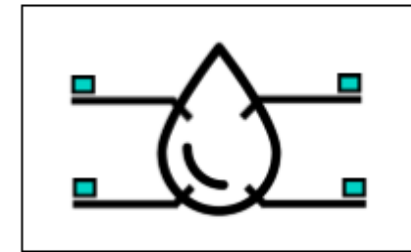
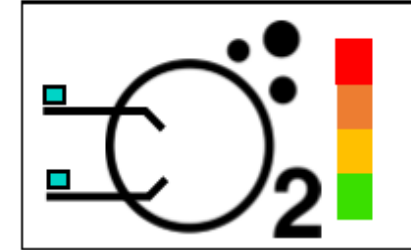
Provides current wind information and wind progression alerts at various heights for site operations applicable to crane operations and open floor conditions.

## Water Testing:

Real-time monitoring and reporting as required by governing agencies with respect to standards regarding E. Coli, manganese, Zinc, or other contaminates.

## Real-time secure remote access for authorized personnel

- Operational Loss Prevention
- Critical Alert Awareness
- Safe Work Environment 24/7/365



# REAL-TIME SUPPLY CHAIN INTEGRATION

## Visibility into Third-Party Subcontractors Systems

(Example, ready-mix supplier)

- Location and ETA of the ready-mix delivery
- Amount of concrete on-board
- Amount of water added to the load/discharge time
- Amount of concrete poured
- Quality of mix
- Arrival & departure time-stamped
- Driver ID, location & man-down alerts
- Delivery confirmation
- Route & schedule optimization

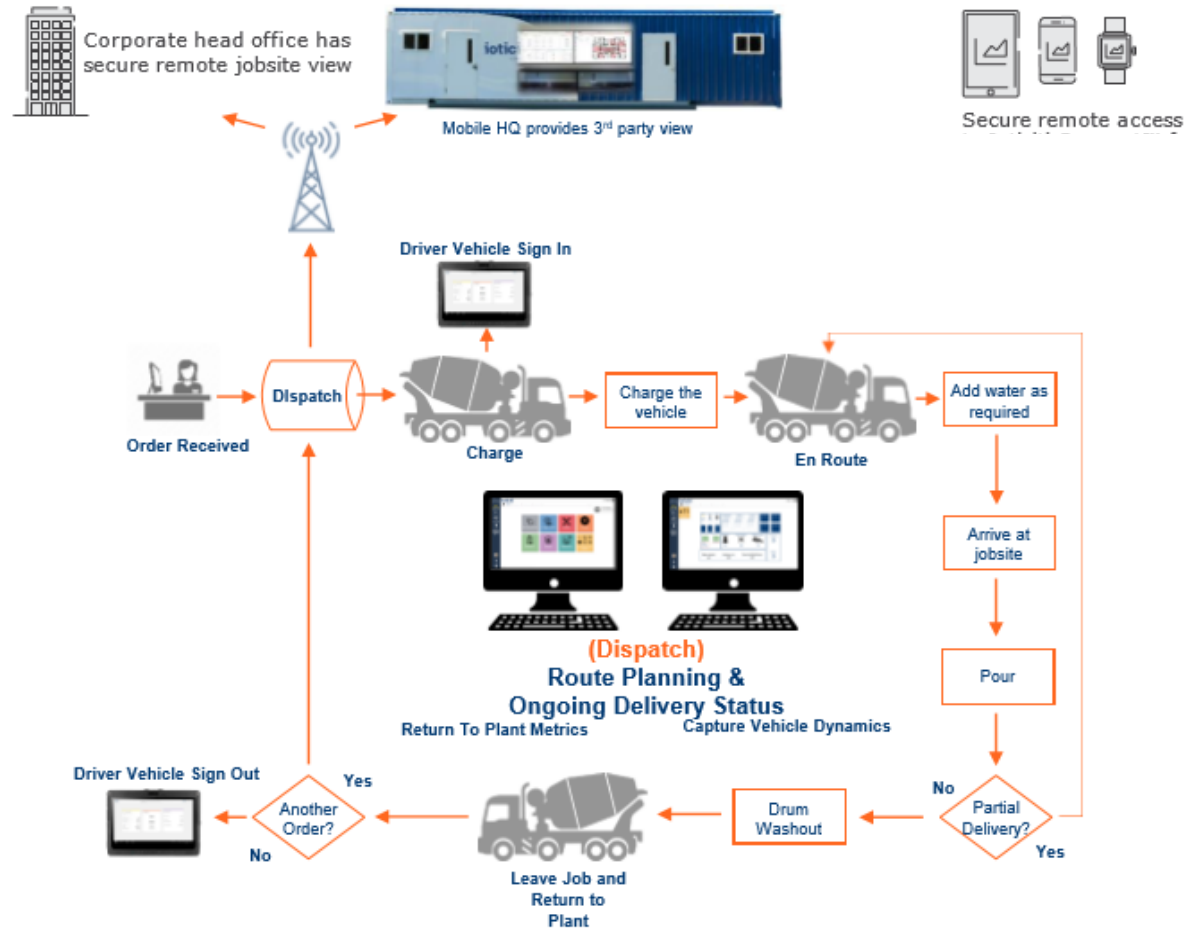
The screenshot displays a software interface for managing concrete orders. On the left, a list of orders is shown, including Order M60108 - DELMANOR AURORA INC. with details like address and delivery date. The main panel shows details for Order M60108, including delivery date (02/14/2020), time (12:02), and driver information (WAYNE, Mix id: 35REG, Mix name: 35 MPa). A red box highlights the driver and mix information. The right side features a map showing the delivery location (Delmanor Butternut Ridge - 25 Butternut Ridge Trail, Toronto, ON) and the supplier location (Maple Ready-Mix Aggregates). A progress bar indicates the amount of concrete on-board (6 m³ / 100%) and poured (6 m³).



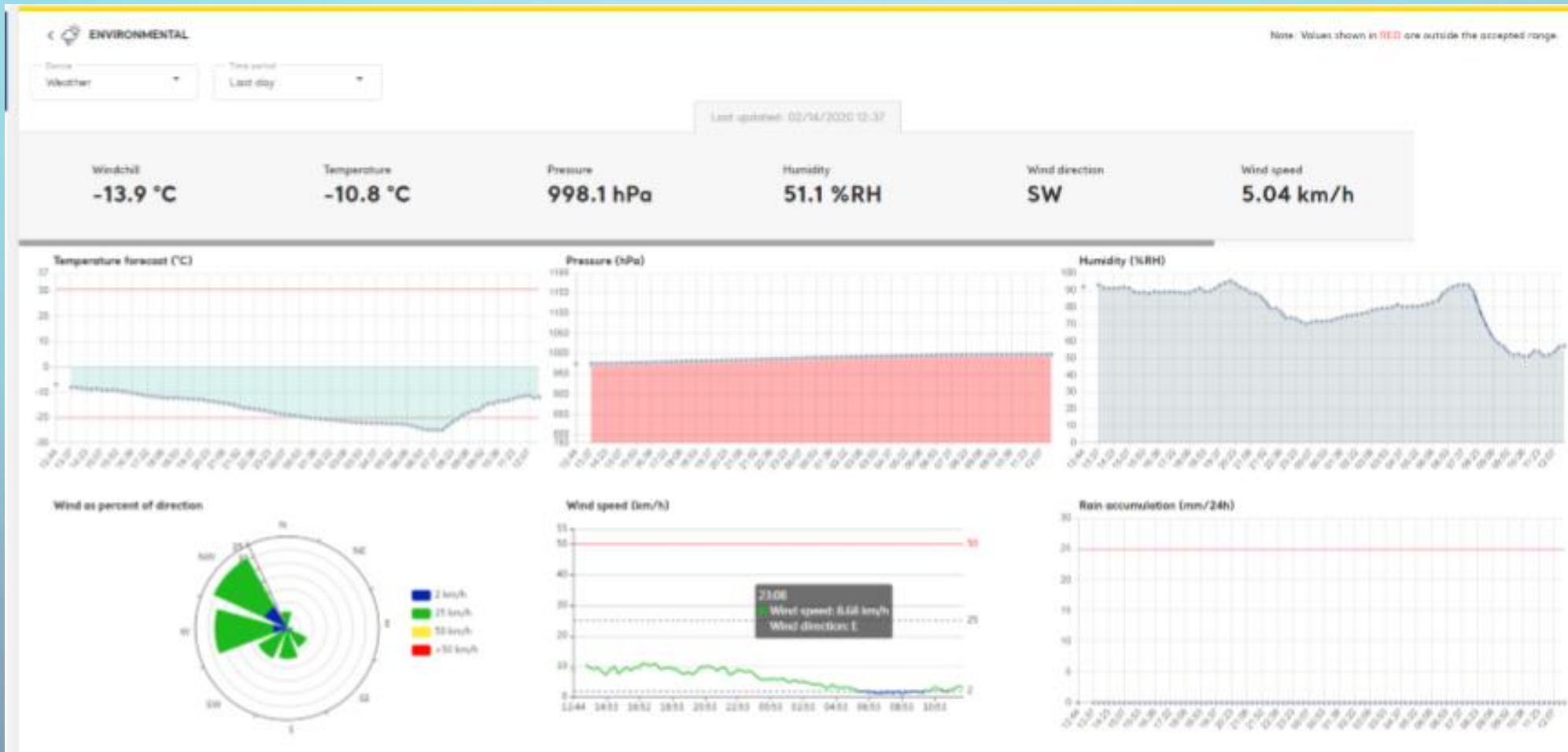
# SUPPLY CHAIN WORKFLOW

## Visibility into Third Party Subcontractors Systems Example, third party ready-mix company

- Location and ETA of the ready mix delivery
- Amount of concrete on-board
- Amount of water added to the load at discharge time
- Amount of concrete poured
- Quality of mix
- Arrival & Departure time stamped
- Driver ID, Location & Man Down Alerts
- Delivery confirmation
- Route & schedule optimization



# WEATHER & ENVIRONMENTAL REPORTING



# BLUEPRINT EDITING & REPORTING

- Eliminate delivery cost
- Reduce response times
- Increase project planning
- Increases productivity
- Reduce down-time
- Reduce risk of building mistakes
- Update multiple parties instantly
- Increase transparency
- One common data environment
- Record historical changes



# JOBSITE LAYOUT – FLOOR BY FLOOR

## Automatic Precision Locating:

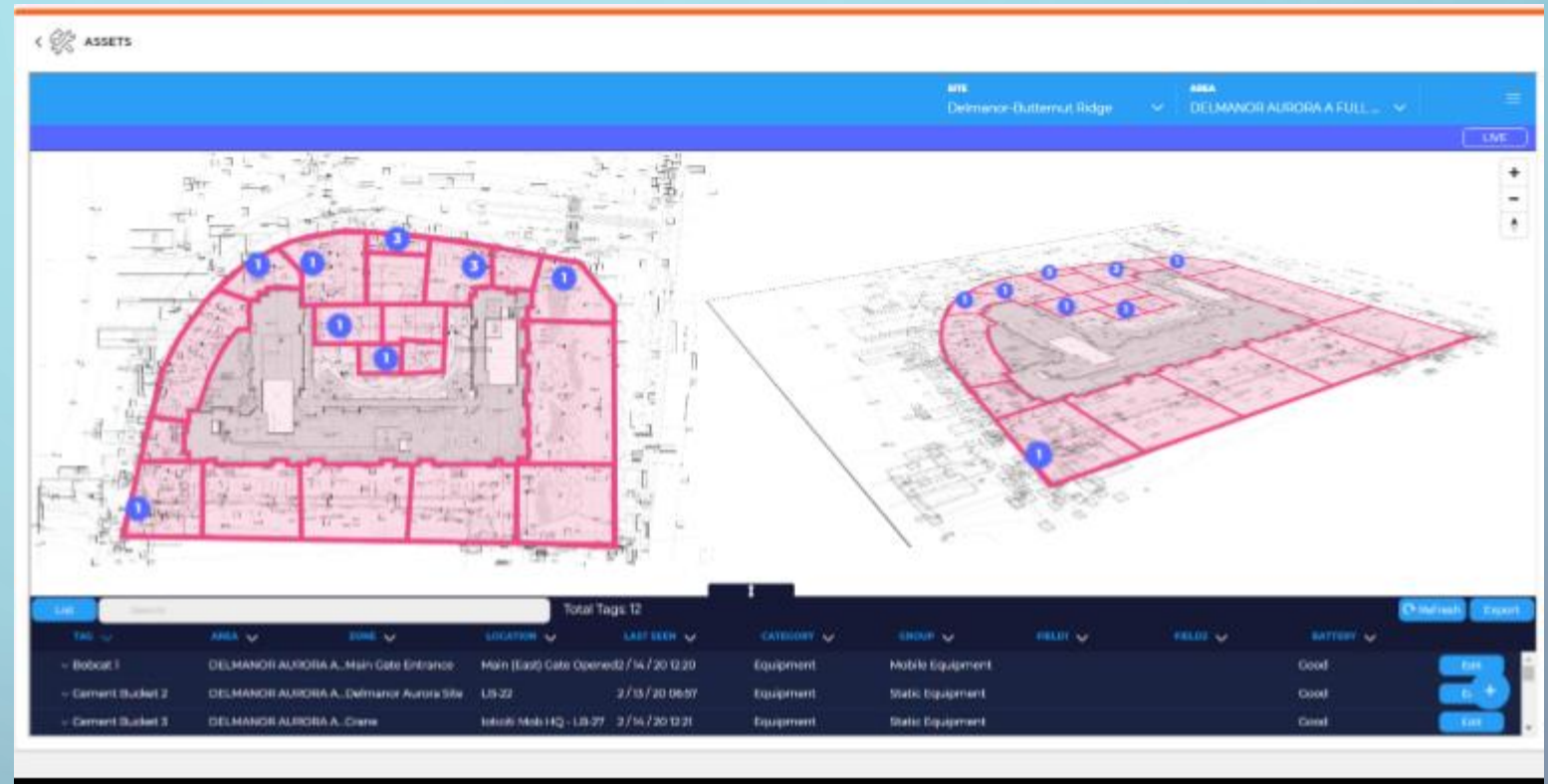
- Assets
- Workforce
- Equipment
- Safety stations

## In the event of an emergency:

- Locate your workforce
- Reduce response times
- Reduce evacuation times

## Full Visibility – 360° Performance:

- Improves jobsite safety
- Increases productivity
- Reduce lag times
- Complete jobsite visibility



# EQUIPMENT & TOOL MONITORING

## Authorized Use Protocol

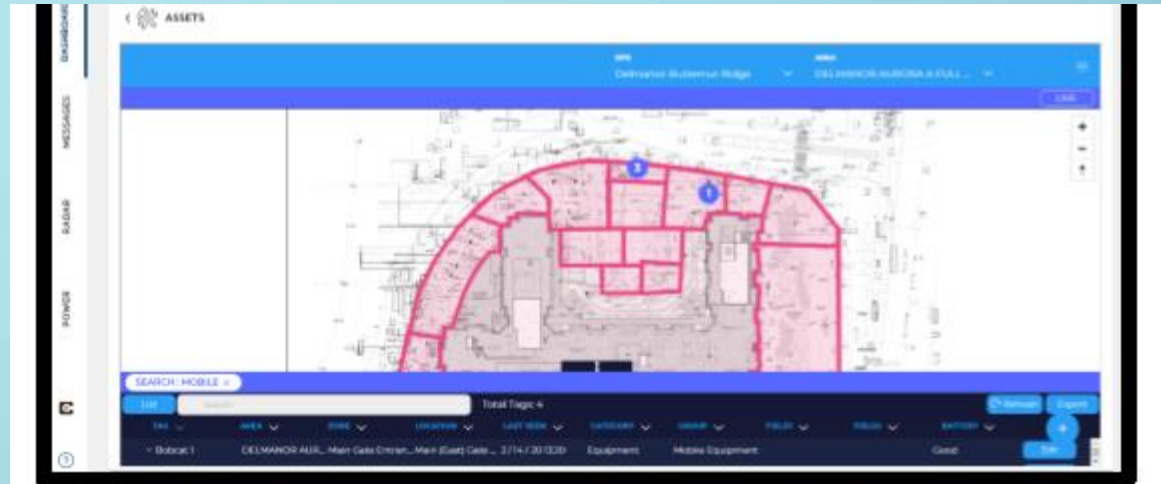
- Unauthorized detection/alerts
- On board operator recognition allows only authorized use of equipment

## Theft Prevention/Equipment Round Up

- All tools that require monitoring will have IoT Tags
- Alerts will be created for equipment that leaves the job site

## Equipment Round Up

- Site supervisor initiated command to check if all equipment is secure at the end of the day
- During the various phases of construction all equipment will be monitored for mission critical data and alerts
- Precision location monitoring
- On/off monitoring and alerts



Active IoT tags provide precision location of equipment & tools



# WORKFORCE MONITORING & PRECISION LOCATION

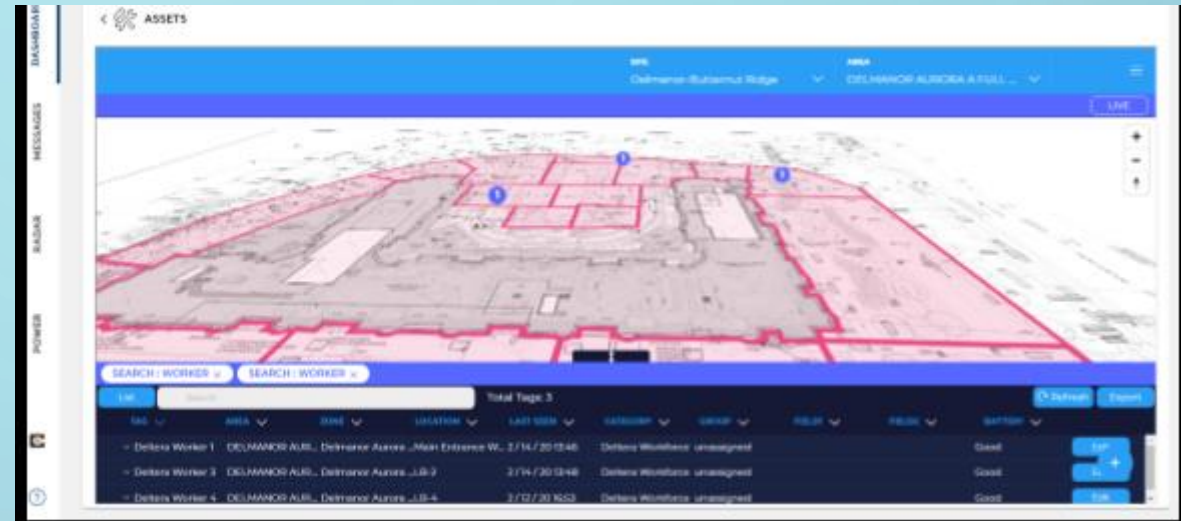
## Tag for workers

- Live count shows how many workers are on site
- Arrival & departure of workers
- How long a worker has been on site
- Location of workers on site
- Man-down alert
- Centralized worker data

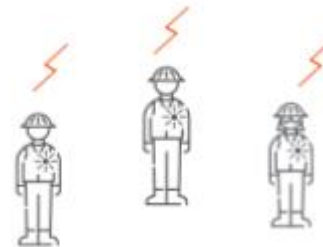
**Real-time secure remote access**  
to Iotciti Connect Mobile HQ services for  
authorized personnel from anywhere in the world.

- Operational loss prevention
- Critical alert awareness
- Safe work environment 24/7/365

**Safe, Secure, Efficient**



**Active IoT workforce monitoring tags enhance worker safety providing critical alerts**



# SITECENTER HQ MOBILE DIAGNOSTICS

## Real-Time Rugged Jobsite Viewer

Wall mounted and portable display to centralize all data on the jobsite.

### Live count:

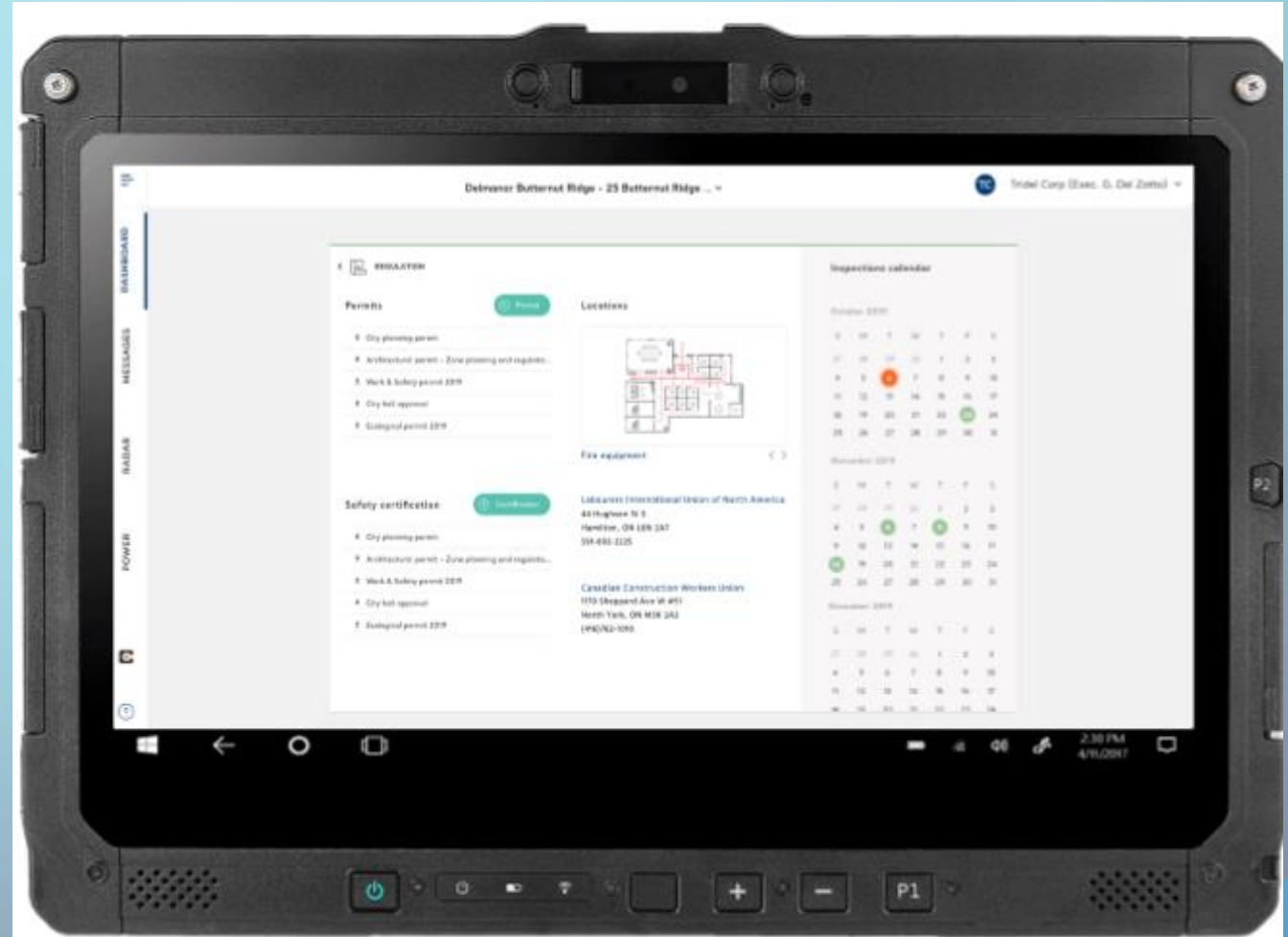
- Workers
- Equipment
- Material
- Third party subcontractors
- Incident reports
- Delays

### Portable scanning capabilities:

- Documents
- Union cards

### Environmental:

- Weather monitoring
- Wind reporting
- Air quality control
- Water testing/reporting



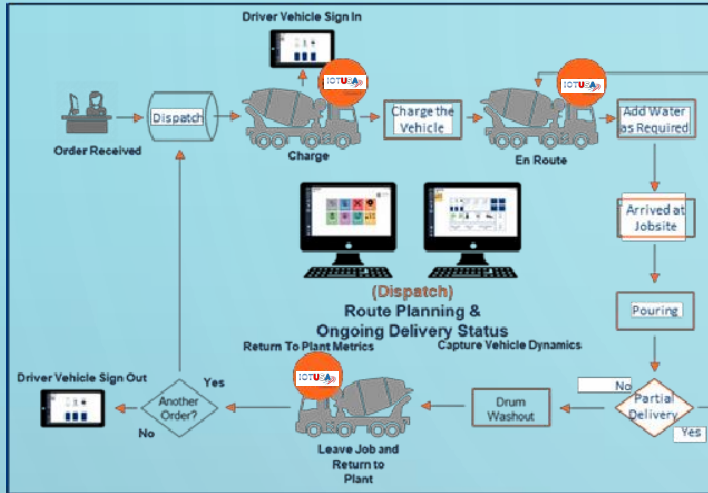
# APPENDIX 1: CONSTRUCTION INDUSTRY FACTS

1. Workforce Safety “Mobile HQ” - About 64% of all on the job fatalities in construction is due to the “Fatal Four” hazards: falls, electrocution, being struck by an object, and being crushed. [[Bureau of Labor Statistics](#)]
2. 37% of firms are experimenting with drones — up 10% from 2016. [[JBK](#)]
3. 57% of companies are considering job-site employee tracking. [[JBK](#)]
4. 11% of general contractors are using wearable technology. [[JBK](#)]
5. 39% of companies cite “lack of IT staff” as the most limiting factor in adopting new technology. [[JBK](#)]
6. 90% of all global infrastructure projects are either over-budget or delayed. [[FMI](#)]
7. 15% of construction firms reported having a staff of over 1,000 individuals. [[JBK](#)]
8. The average hourly wage of all construction employees is \$29.95 USD. [[Bureau of Labor Statistics](#)]

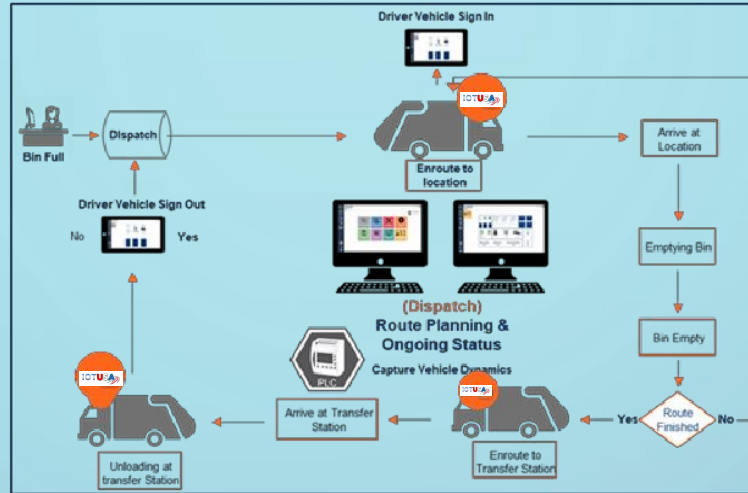


# APPENDIX 2: APPLICATIONS, WORKFLOW & VERTICALS

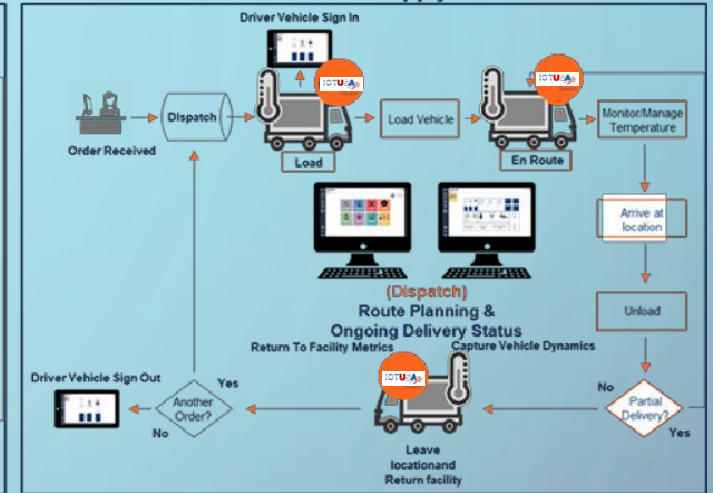
Ready Mix



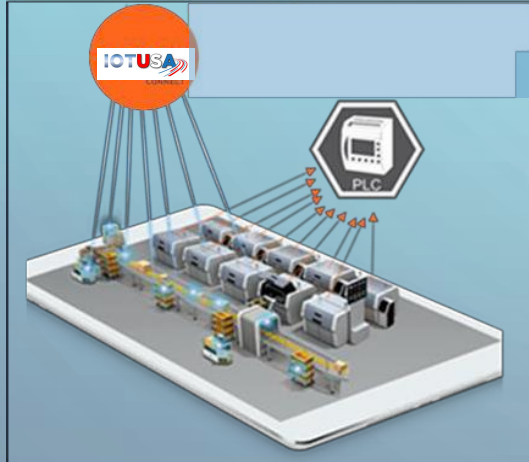
Waste Management



Cold Chain Supply



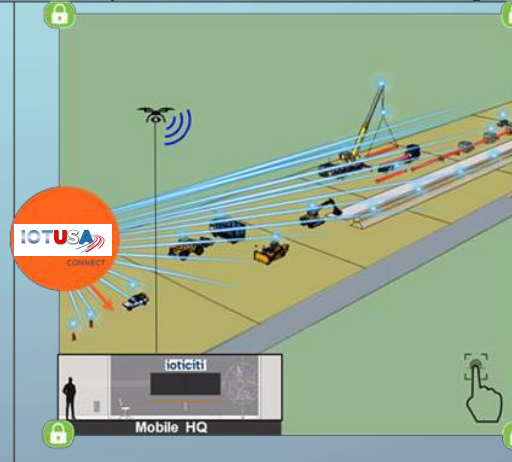
PLC



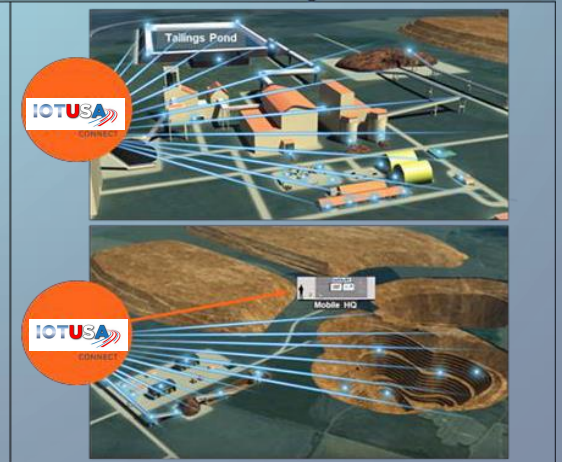
Sports & Entertainment Venue



Pipeline Construction & Monitoring



Mining



THANK YOU

